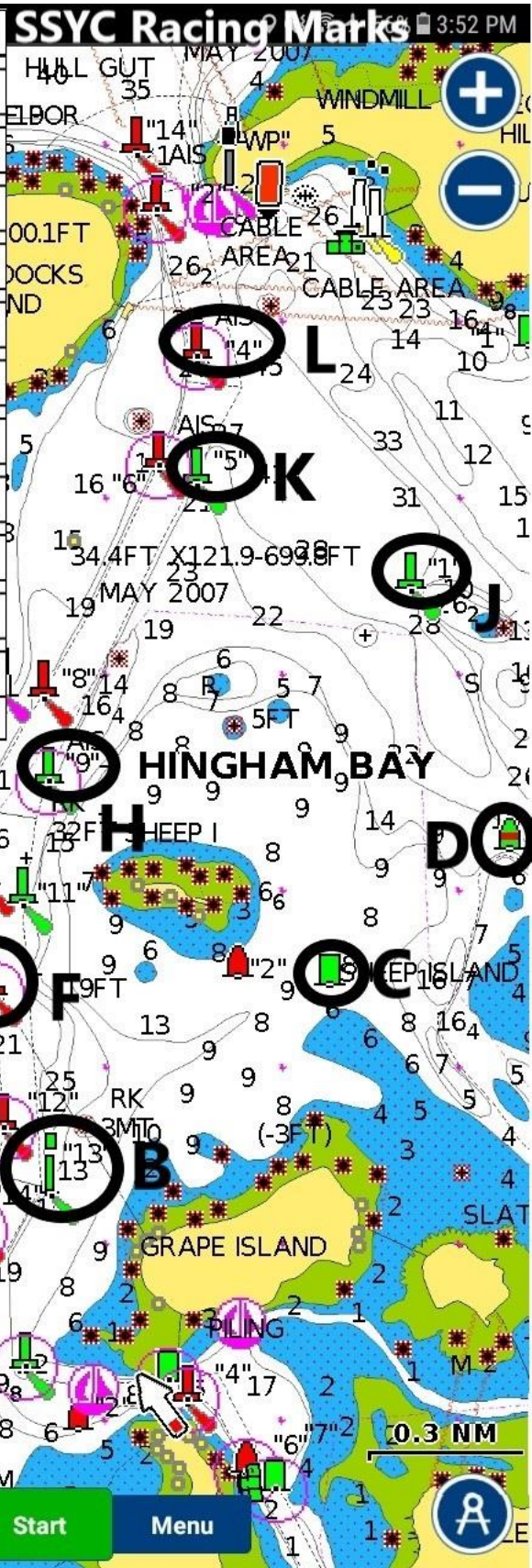


Mark	Description	Lat N	Lon W
A	G17, Fore River Channel	42 15.75	70 56.24
B	G13, Grape Island	42 16.27	70 55.79
C	G1, Sheep Island	42 16.69	70 55.07
D	RG, Bumpkin Island, Crow Flats	42 16.94	70 54.60
E	G1, Quincy YC, Houghs Neck Channel	42 16.55	70 56.61
F	RG, Western Way	42 16.67	70 55.92
G	R2, Western Way Peddocks Island	42 17.02	70 56.98
H	G9, Fore River Channel, Sheep Island	42 17.06	70 55.79
J	G1, Bumpkin Island Shoal	42 17.45	70 54.86
K	G5, Weymouth Fore River Channel	42.16.65	70 55.39
L	R4, Weymouth Fore River Channel	42 17.86	70.55.40



Map interface elements including:

- Route** button (blue)
- Start** button (green)
- Menu** button (blue)
- Compass rose (bottom left)
- Scale bar (bottom right, 0.3 NM)
- Navigation controls (top right: zoom in/out buttons)